

# Missouri City Landfill

Clay County, Missouri

October 2018

BFI Waste Systems of North America (BFI) is pleased to provide this update to its Missouri City Landfill neighbors describing continuing efforts to maintain the landfill.

## **Background**

In September 1983, the Missouri City Landfill accepted its last shipment of waste. Immediately thereafter, work started to close the landfill.

Closure work involved: constructing an engineered containment system that includes a landfill cap which provides a physical barrier to the waste (the cap is generally constructed of approximately 18 inches of compacted clay, which is covered by a 20 mil PVC liner and geotextile layer, and then approximately 24-inches of vegetative cover layer on top of the PVC liner and geotextile layer); implementing a groundwater monitoring program; developing a post-closure care plan to inspect and repair the engineered systems; and establishing financial instruments to make sure money is available to pay for the post-closure care costs in the future.

## **Community Relations Plan**

Missouri Department of Natural Resources (MDNR) renewed the post-closure care permit on 14 August 2017, and a requirement of the permit is for BFI to prepare a Community Relations Plan (CRP). The CRP will provide details on how BFI will keep the community informed of activities at the Missouri City Landfill. In

the May 2018 Newsletter, BFINA included a survey for you to provide your input for the CRP and to provide feedback to BFINA. BFINA thanks those of you that completed and returned the survey! A summary of the results of the survey will be provided in the CRP. It is anticipated that the CRP will be finalized this fall.

## **Water Treatment Plant Construction**

MDNR approved the construction of a state-of-the-art water treatment plant with the renewal of the post-closure care permit. The water treatment plant will treat water that has been impacted by waste previously disposed of at the landfill and captured through various containment systems installed around the landfill. The constructed water treatment plant will only treat water collected at the landfill. State and federal law prohibits the treatment plant from treating water from any other facility.

Construction of the water treatment plant began in September 2017. Construction of the water treatment plant is mostly complete and start up testing was completed in September 2018. The startup testing was successful and the water treatment plant became operational the week of 1 October 2018. Currently, the treated water is being stored in one of the 250,000-gallon storage tanks and will be sampled prior to discharge. The sampling results must be below the discharge permit limits before BFINA can discharge the treated water to Outfall #3. It is anticipated that the first discharge from

the water treatment plant will occur in November or December 2018. A photograph of the water treatment plant building and associated storage tanks is provided in Figure 1.



**Figure 1. Photograph of the Missouri City Landfill 250,000-gallon storage tanks and the water treatment plant building.**

### **Semi-Annual Sampling**

As part of the post-closure care for the facility, monitoring is required by the post-closure care permit. The monitoring program includes the semi-annual sampling of monitoring wells, surface water sampling locations, groundwater discharge locations, one seep, and sumps. The sampling locations that are part of the monitoring program are presented on Figure 2. The results from the February and May 2018 sampling events were summarized in a semi-annual report that was submitted to MDNR on 30 August 2018.

A semi-annual sampling event occurred in August 2018 and it is anticipated that the

next sampling event will occur in November 2018. The data obtained from the semi-annual sampling will be included in an annual report that will be submitted to the MDNR and the Environmental Protection Agency (EPA) in March 2018.

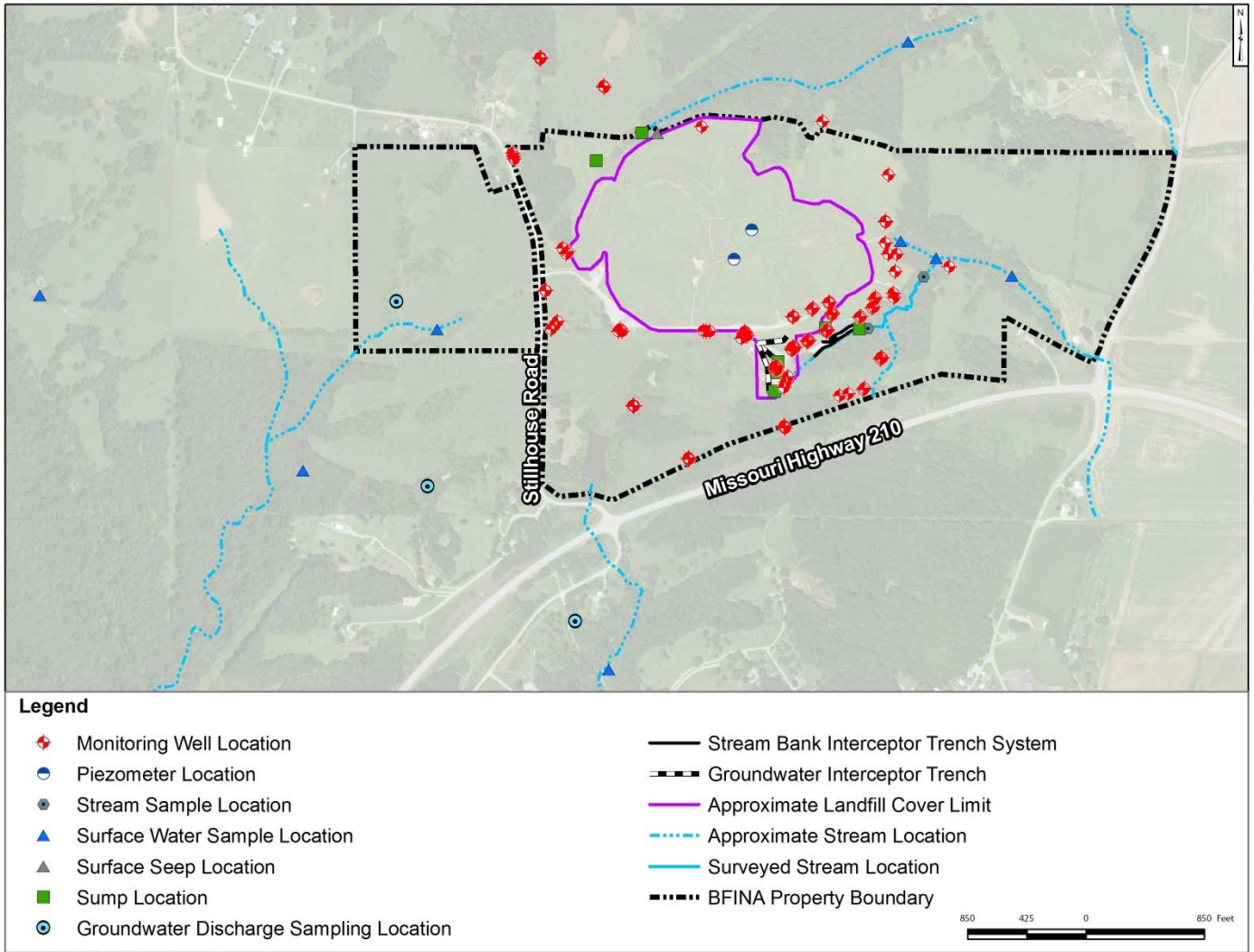
### **How Can I Get More Information?**

BFI would like to hear your thoughts and to understand what it can do to keep you informed about the Missouri City Landfill. In addition, we would be happy to provide you copies of the most recent semi-annual report submitted to MDNR and EPA.

If you would like a copy of the most recent semi-annual report or if you have any questions or comments regarding the facility, please contact BFI's Environmental Manager, Cassidy Luebbering. Cassidy can be reached by telephone at (573) 636-1142 or by writing to:

Cassidy Luebbering  
BFI  
5605 Moreau River Access Road  
Jefferson City, MO 65101

Thank you for your involvement and for any suggestions you can provide to help BFI continue to be a good neighbor.



**Figure 2 Missouri City Landfill Sampling Locations that are part of the Monitoring Program.**