

Missouri City Landfill

Clay County, Missouri

April 2017

BFI Waste Systems of North America (BFI) is pleased to provide this update to its Missouri City Landfill neighbors describing continuing efforts to maintain the landfill.

Background

In September 1983, the Missouri City Landfill accepted its last shipment of waste. Immediately thereafter, work started to close the landfill.

Closure work involved constructing an engineered containment system that includes a landfill cap which provides a physical barrier to the waste; implementing a groundwater monitoring program; developing a post-closure care plan to inspect and repair the engineered systems; and establishing financial instruments to make sure money is available to pay for all the post-closure care costs in the future.

Storage Tank Construction

To assure the facility has adequate storage for the groundwater and leachate that is collected by the groundwater interceptor trench and the stream bank interceptor trench systems, two 250,000-gallon storage tanks and the associated secondary containment (concrete structure that would contain any possible leak from the tanks should one occur) were constructed. The secondary containment structure was built in the fall of 2016 and the tanks were constructed in the spring of 2017. The secondary containment structure was tested in December 2016 to verify the structure

was watertight. A photo of the storage tanks and associated secondary containment is provided as Figure 1.



Figure 1. Photograph of the Missouri City Landfill 250,000-gallon storage tanks and secondary containment.

Semi-Annual Sampling

As part of the post-closure care for the facility, monitoring is required by the “post-closure care permit”. The monitoring program includes the semi-annual sampling of monitoring wells, surface water sampling locations, groundwater discharge locations, seep locations, and sumps. The sampling locations that are part of the monitoring program are presented on Figure 2. The semi-annual sampling event occurred in February 2017 and it is anticipated that the second semi-annual sampling event will occur in August 2017. The data obtained from the semi-annual sampling will be included in a semi-annual report that will be submitted to the Missouri Department of Natural Resources (MDNR) and the Environmental Protection Agency (EPA).

How Can I Get More Information?

BFI would like to hear your thoughts and to understand what it can do to keep you informed about the Missouri City Landfill. In addition, we would be happy to provide you copies of the most recent semi-annual report submitted to MDNR and EPA.

If you would like a copy of the most recent semi-annual report or if you have any questions or comments regarding the facility, please contact BFI's Environmental

Manager, Cassidy Luebbering. Cassidy can be reached by telephone at (573) 636-1142 or by writing to:

Cassidy Luebbering
BFINA
5605 Moreau River Access Road
Jefferson City, MO 65101

Thank you for your involvement and for any suggestions you can provide to help BFI continue to be a good neighbor.

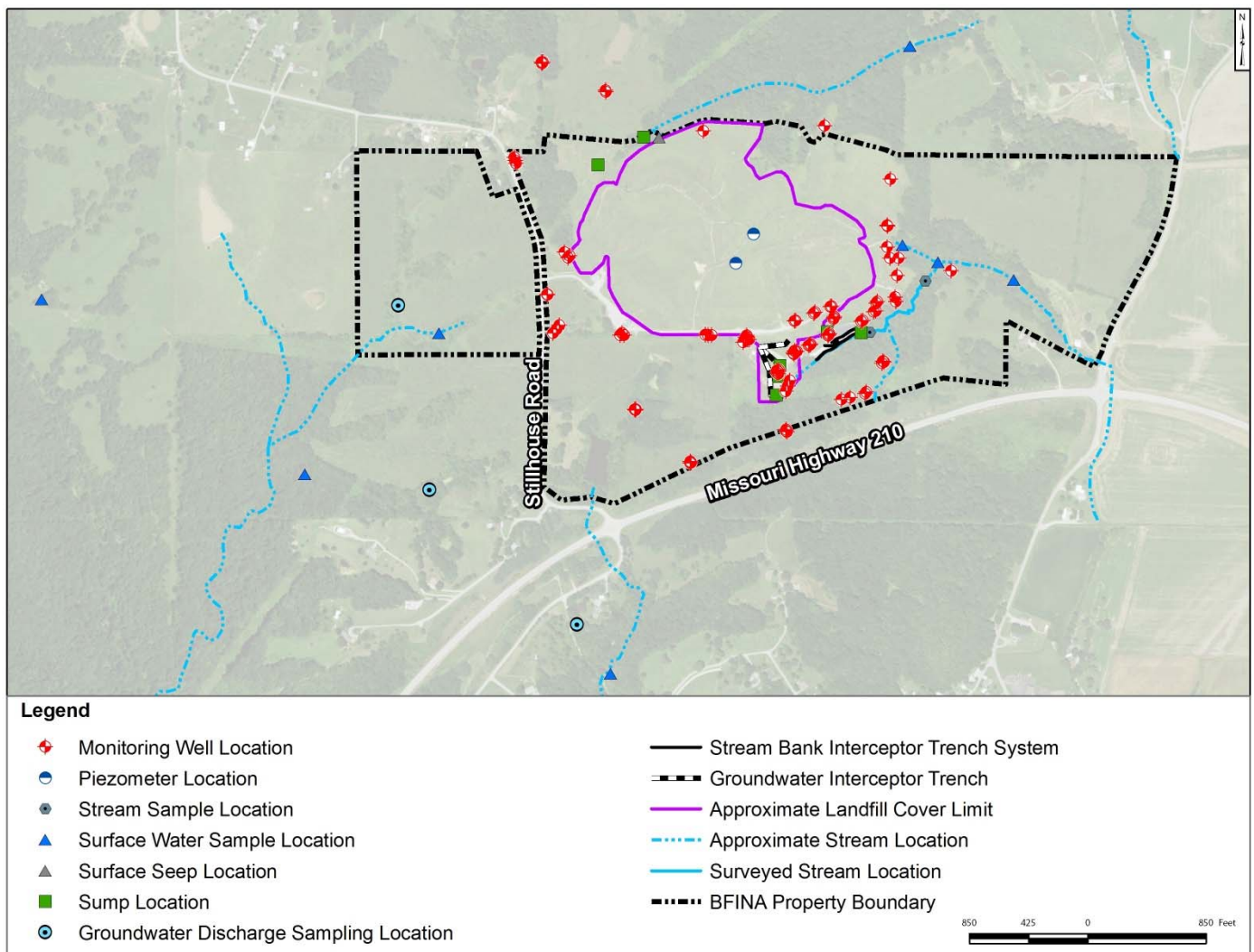


Figure 2. Missouri City Landfill Sampling Locations that are part of the Monitoring Program.