

Missouri City Landfill

Clay County, Missouri

May 2018

BFI Waste Systems of North America (BFI) is pleased to provide this update to its Missouri City Landfill neighbors describing continuing efforts to maintain the landfill.

Background

In September 1983, the Missouri City Landfill accepted its last shipment of waste. Immediately thereafter, work started to close the landfill.

Closure work involved constructing an engineered containment system that includes a landfill cap which provides a physical barrier to the waste; implementing a groundwater monitoring program; developing a post-closure care plan to inspect and repair the engineered systems; and establishing financial instruments to make sure money is available to pay for the post-closure care costs in the future.

Community Relations Plan

Missouri Department of Natural Resources (MDNR) renewed the post-closure care permit on 14 August 2017, and a requirement of the permit is for BFI to prepare a Community Relations Plan (CRP). The CRP will provide details on how BFI will keep the community informed of activities at the Missouri City Landfill. As part of the CRP development, BFI is requesting community input for the CRP; therefore, we have included a survey with this newsletter for you to provide your feedback to BFI. Please complete the survey and return it to BFI in the self-

addressed stamped envelope provided. We look forward to receiving your feedback!

Water Treatment Plant Construction

MDNR approved the construction of a state-of-the-art water treatment plant with the renewal of the post-closure care permit. Construction of the water treatment plant began in September 2017. You may have noticed more traffic and activity due to construction activities. It is anticipated that the water treatment plant will be operational in the summer of 2018. A photograph of the water treatment plant building and associated storage tanks is provided in Figure 1.



Figure 1. Photograph of the Missouri City Landfill 250,000-gallon storage tanks and the water treatment plant building.

The water treatment plant will treat water that has been impacted by waste previously disposed of at the landfill and captured through various containment systems installed around the landfill. The proposed treatment plant will only treat water collected at the landfill. State and federal law prohibits the treatment plant from treating water from any other facility. Until the treatment plant is operational, collected

water will still be shipped by semi-truck from the facility to processing locations in Kansas City and Indianapolis.

Semi-Annual Sampling

As part of the post-closure care for the facility, monitoring is required by the post-closure care permit. The monitoring program includes the semi-annual sampling of monitoring wells, surface water sampling locations, groundwater discharge locations, seep locations, and sumps. The sampling locations that are part of the monitoring program are presented on Figure 2. The semi-annual sampling event occurred in February 2018 and it is anticipated that the next sampling event will occur in May 2018. The data obtained from the semi-annual sampling will be included in a semi-annual report that will be submitted to the MDNR and the Environmental Protection Agency (EPA).

How Can I Get More Information?

BFI would like to hear your thoughts and to understand what it can do to keep you informed about the Missouri City Landfill. In addition, we would be happy to provide you copies of the most recent semi-annual report submitted to MDNR and EPA.

If you would like a copy of the most recent semi-annual report or if you have any questions or comments regarding the facility, please contact BFI's Environmental Manager, Cassidy Luebbering. Cassidy can be reached by telephone at (573) 636-1142 or by writing to:

Cassidy Luebbering
BFI
5605 Moreau River Access Road
Jefferson City, MO 65101

Thank you for your involvement and for any suggestions you can provide to help BFI continue to be a good neighbor.

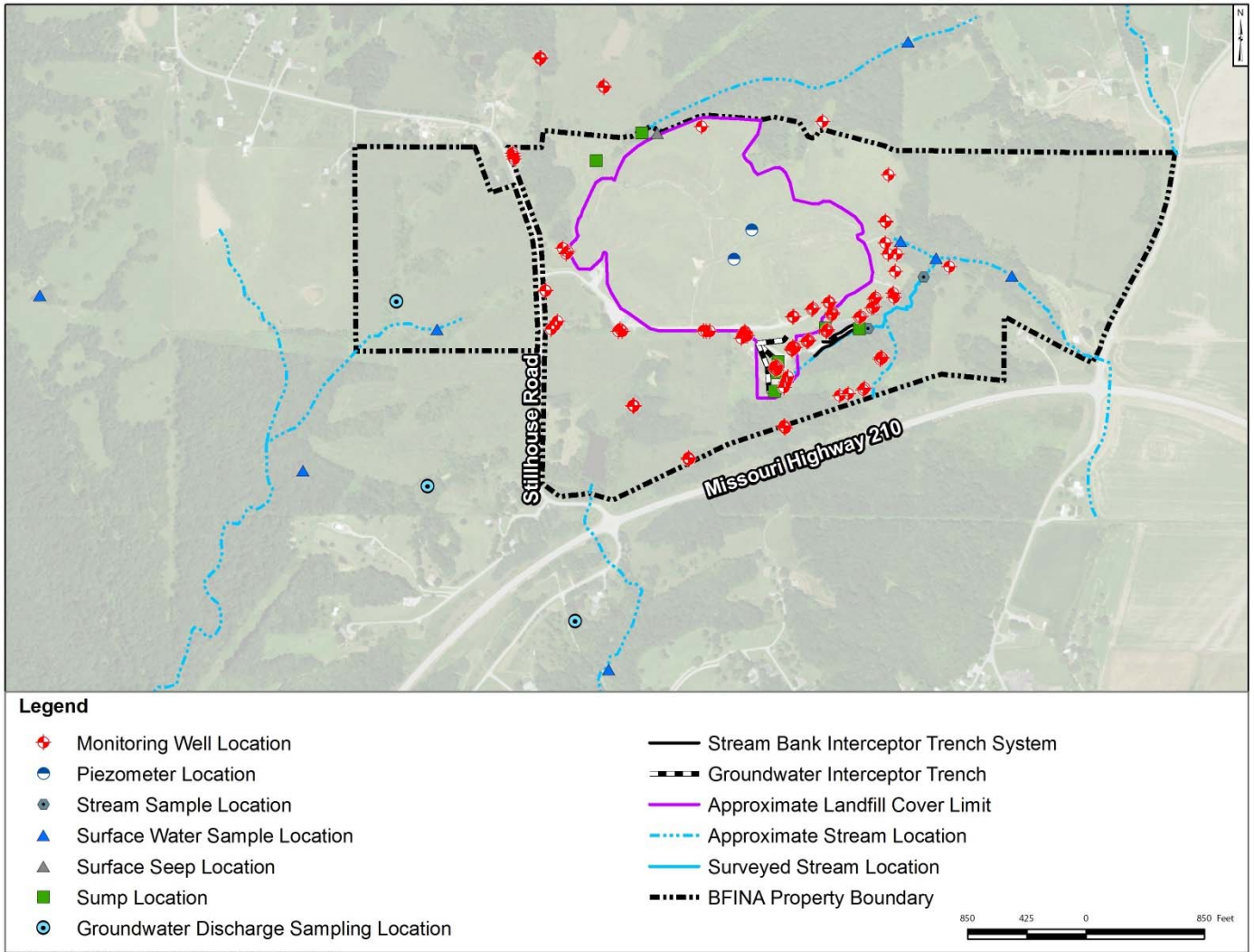


Figure 2 Missouri City Landfill Sampling Locations that are part of the Monitoring Program.